

Color Field K2226

KnollTextiles

KT Collection *affordable modern design*

Primary Use

Upholstery

Content

Polyurethane (face) 100%

Width

54 inches

High Performance

250,000+ double rubs

Ink and stain resistant

Bleach cleanable

Alcohol cleanable

Environmental

GREENGUARD® certified



K2226/6 Tangerine



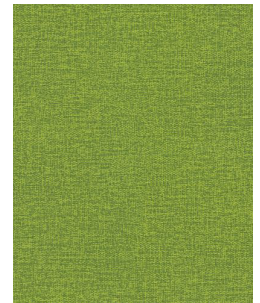
K2226/1 Paper



K2226/2 Oatmeal



K2226/3 Straw



K2226/4 Aloe



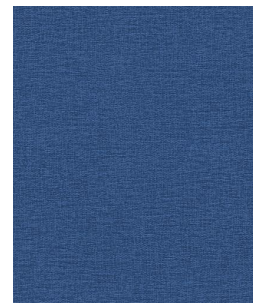
K2226/5 Seaglass



K2226/6 Tangerine



K2226/7 Chili



K2226/8 Blueprint



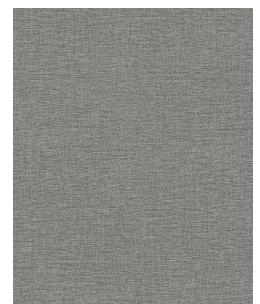
K2226/9 Wind



K2226/10 Café



K2226/11 Platinum



K2226/12 Iron

Name	Color Field KT Collection
Style Number	K2226
Primary Use	Upholstery
Content	Polyurethane (face) 100%
Backing	Polyester/cotton woven
Finish	Ink and stain repellent
Weight	23.5 oz. per linear yard
Width	54 inches
Flame Resistance	NFPA 260 (UFAC class 1)
Lightfastness	AATCC 16E, 40 hours, Class 4.5
Abrasion	250,000+ double rubs, Wyzenbeek method Multiple factors affect fabric durability and appearance retention, including end-user application and proper maintenance. Wyzenbeek results above 100,000 double rubs have not been shown to be a reliable indicator of increased fabric lifespan.
Content	W: Clean with water based cleaning agent, or diluted household bleach. Cleanable with isopropyl alcohol.
Custom	Some custom colors available with a minimum of 300 yards. Additional charges or lead times may be required.
Environmental	This fabric is GREENGUARD® certified and may contribute to LEED® certification. The GREENGUARD® Environmental Institute provides third party certification for low chemical and particle emissions in interiors products.
Note	Subtle variations in texture are an inherent characteristic of this product.

