

Code K2251

KnollTextiles

**Primary Use**

Upholstery

**Content**

Polyester 64%

Cotton 29%

Nylon 7%

**Width**

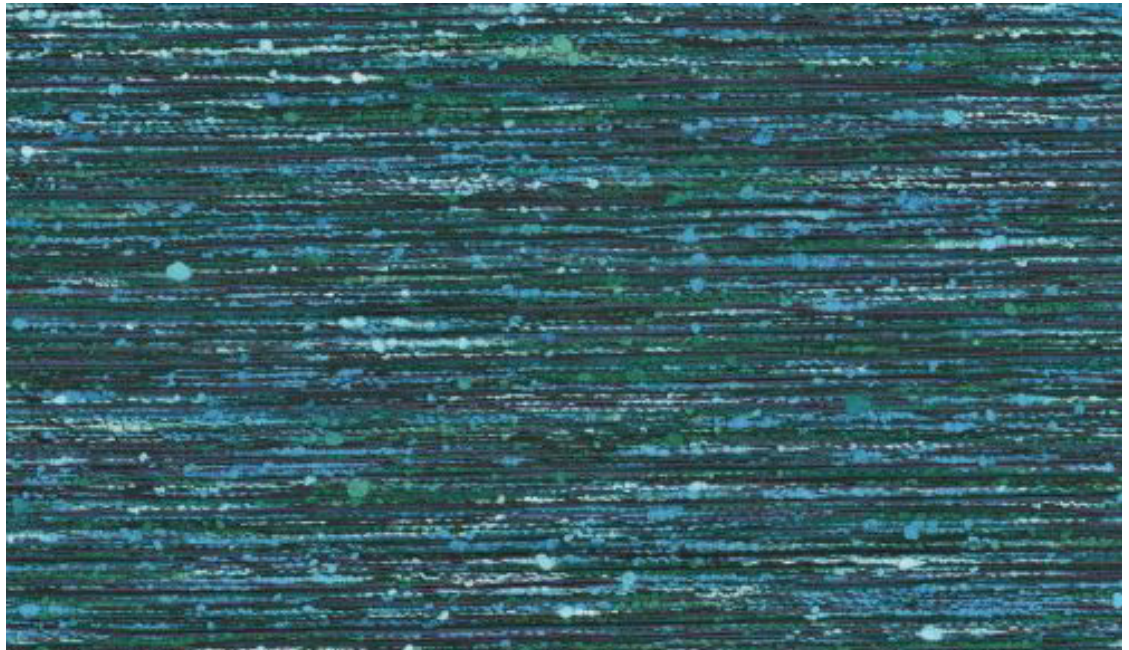
54 inches

**High Performance**

100,000 + double rubs

**Environmental**

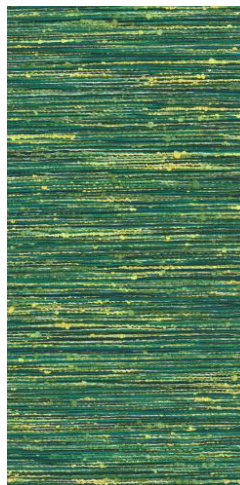
GREENGUARD® certified



K2251/6 Topaz



K2251/1 Citrine



K2251/2 Peridot



K2251/3 Sunstone



K2251/4 Amethyst



K2251/5 Gem



K2251/7 Basalt



K2251/8 Element



K2251/9 Meteor

<b>Name</b>	Code
<b>Style Number</b>	K2251
<b>Primary Use</b>	Upholstery
<b>Content</b>	Polyester 64%, cotton 29%, nylon 7%
<b>Backing</b>	Acrylic
<b>Finish</b>	Soil and stain repellent
<b>Weight</b>	21.5 oz. per linear yard
<b>Width</b>	54 inches
<b>Flame Resistance</b>	NFPA 260 (UFAC class 1)
<b>Lightfastness</b>	AATCC 16E, 40 hours, class 4.5
<b>Abrasion</b>	100,000+ double rubs, Wyzenbeek method Multiple factors affect fabric durability and appearance retention, including end-user application and proper maintenance. Wyzenbeek results above 100,000 double rubs have not been shown to be a reliable indicator of increased fabric lifespan.
<b>Maintenance</b>	S: Clean with solvent based cleaning agent
<b>Custom</b>	Some custom colors available with a minimum of 100 yards. Additional charges or lead times may be required.
<b>Environmental</b>	This fabric is GREENGUARD® certified and may contribute to LEED® certification. The GREENGUARD® Environmental Institute provides third party certification for low chemical and particle emissions in interiors products.
<b>Note</b>	Variations in surface texture are inherent to this fabric.

