



## Folk Tables

Folk is a mercurial, but modest family of chair, stool and table designed for Allermuir by PearsonLloyd. Folk is both timeless in its seemingly familiar design and timely in its modest and ingenious flexibility.

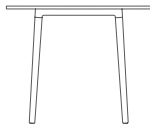
Folk Tables are perfect for both café and occasional environments. Its range of round, square and rectangular configurations are available in a variety of sizes and finish options. Folk's additional features allow you to get creative with

Design by PearsonLloyd

an array of accents colors, these include White, Pistachio, Aubergine, Seattle Green, Crayon Gray and Off-Black.



Dining Height  
Square



Dining Height  
Circular



Dining Height  
Rectangular



## Design PearsonLloyd

Luke Pearson and Tom Lloyd first met while studying Furniture Design and Industrial Design respectively, at London's prestigious Royal College of Art. They set up their multi award winning design studio in 1997. Since then the studio has created stunning

solutions for a variety of international clients from the aviation, workplace, urban design and healthcare sectors identifying and responding to shifting patterns of behaviour in contemporary life.

Standard Features

[\* - Selected models only]

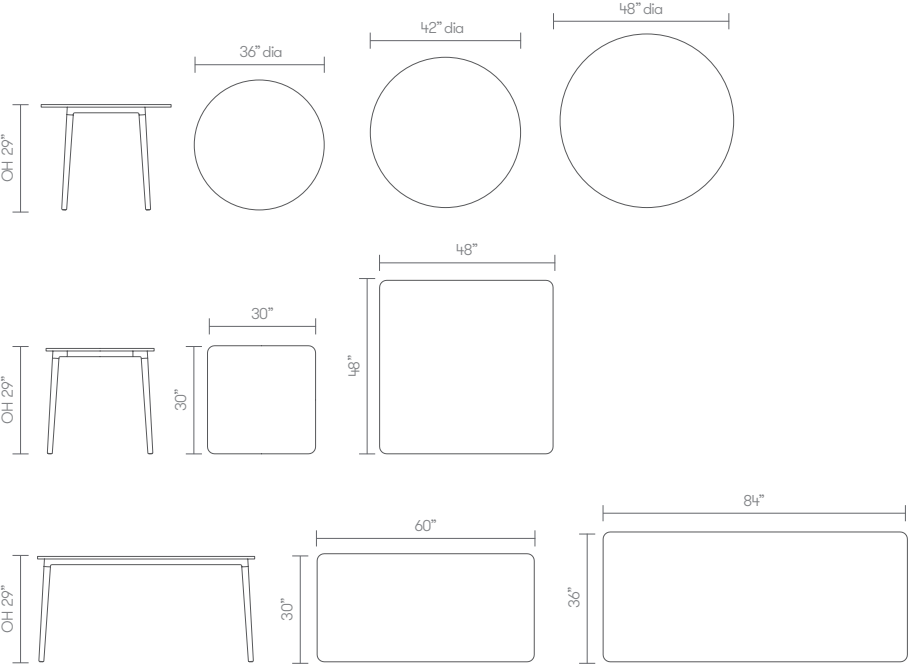
1" laminate faced MDF core top

1" laminate faced Plywood core top

Aluminum corner join and Steel frame understructure

Solid Ash legs with a clear finish  
Plastic glides with leveling adjustment

Dimensions



## Finish Options

Laminate faced MDF core top with contrasting edge tape.

Laminate faced Plywood core top with a clear finish exposed edge detail.

Table edge profile can be stained

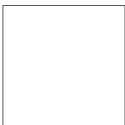
Aluminum corner joint and Steel frame under structure available in Off-Black, White, Crayon Gray, Pistachio, Aubergine and Seattle Green Powder Coat

Solid Ash legs available in Off-Black, White, Crayon Gray, Pistachio, Aubergine and Seattle Green color wash or stained\*

### Frame Finishes



Off-Black powder coat



Matte White powder coat



Crayon Gray powder coat



Pistachio powder coat

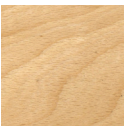


Seattle Green powder coat



Aubergine powder coat

### Solid Wood Finishes

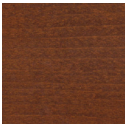


Ash

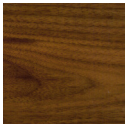
### Color Stains based on Ash



White Oak



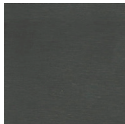
American Cherry



American Walnut



Dark Walnut



Wenge

### Color Washes based on Ash



Off-Black



White



Crayon Gray



Pistachio



Seattle Green



Aubergine

### Contrast Edge Tapes



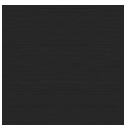
Ply



Oak



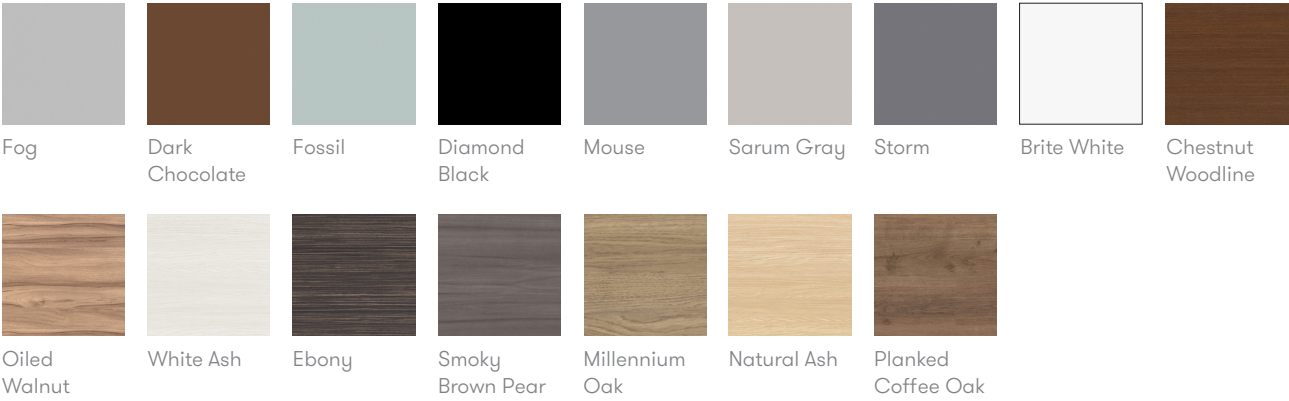
White



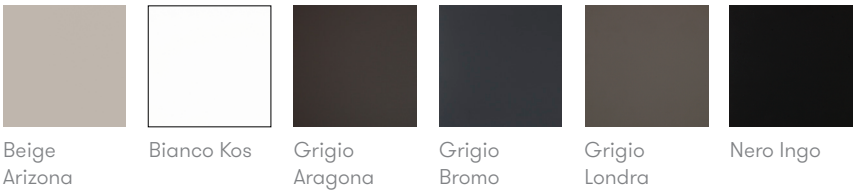
Black

**Note:** Color images are for reference only. Please verify with actual color sample.

Global Laminates



Fenix Laminates



Edge References



Edge Detail # 33

0.75" ply core, specified laminate or linoleum face and counterbalanced with a flat edge, and clear finish or 1" ply core, specified laminate or linoleum face and counterbalanced with a flat edge, clear finish.